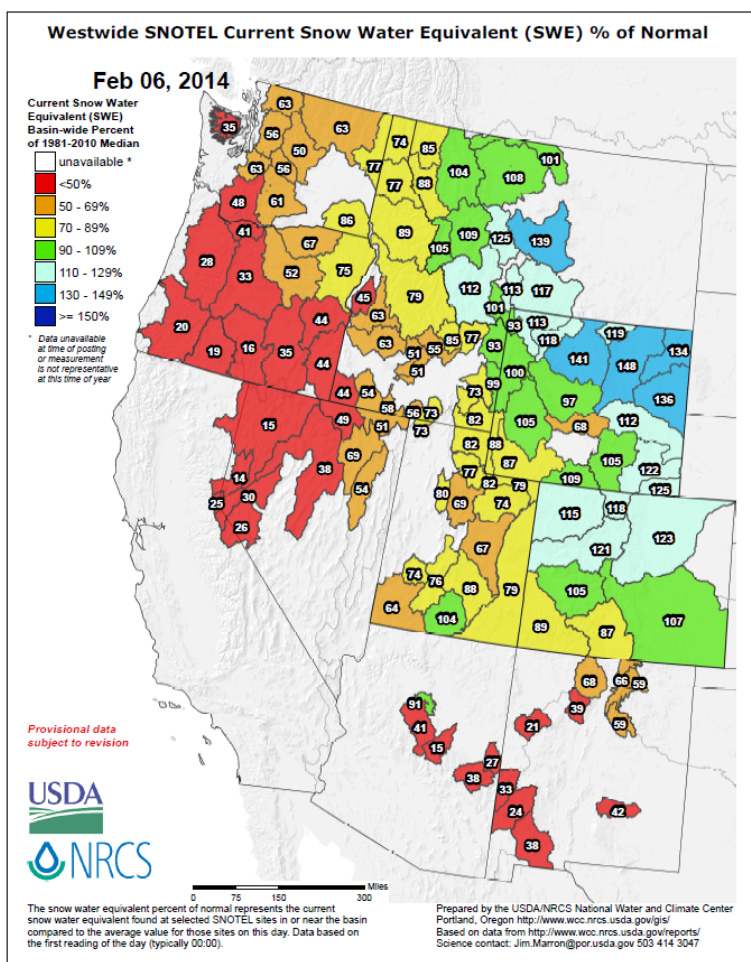


Weekly Snowpack and Drought Monitor Update Report

Snow



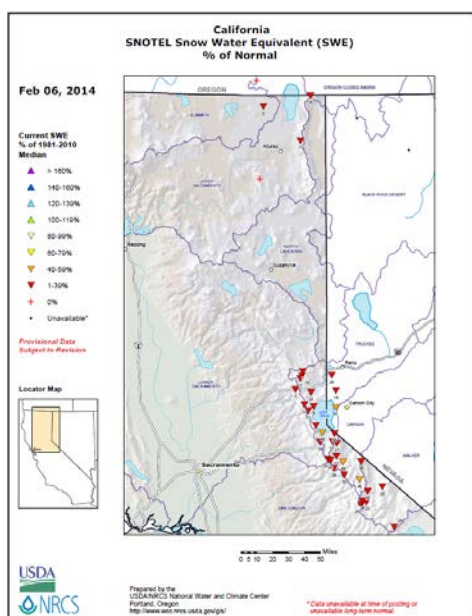
Snow Water Equivalent (SWE) values are higher east of the Continental Divide. The only significant improvement over last week has been over southern Colorado

Conditions west of the Continental Divide and over the Southwest continue to deteriorate.

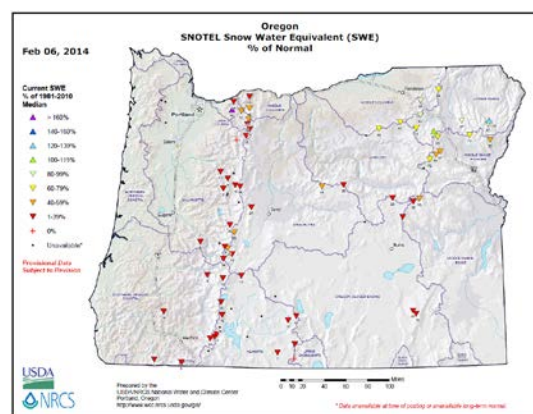
The all-important April 1 SWE date will best determine the water supply forecasts issued by the National Water and Climate Center.

See latest National Snow Analysis

See westwide [water supply forecast tables](#)



California-Nevada SWE map by station



Oregon SWE map by station

California drought prompts first-ever 'zero water allocation' - Jan 31