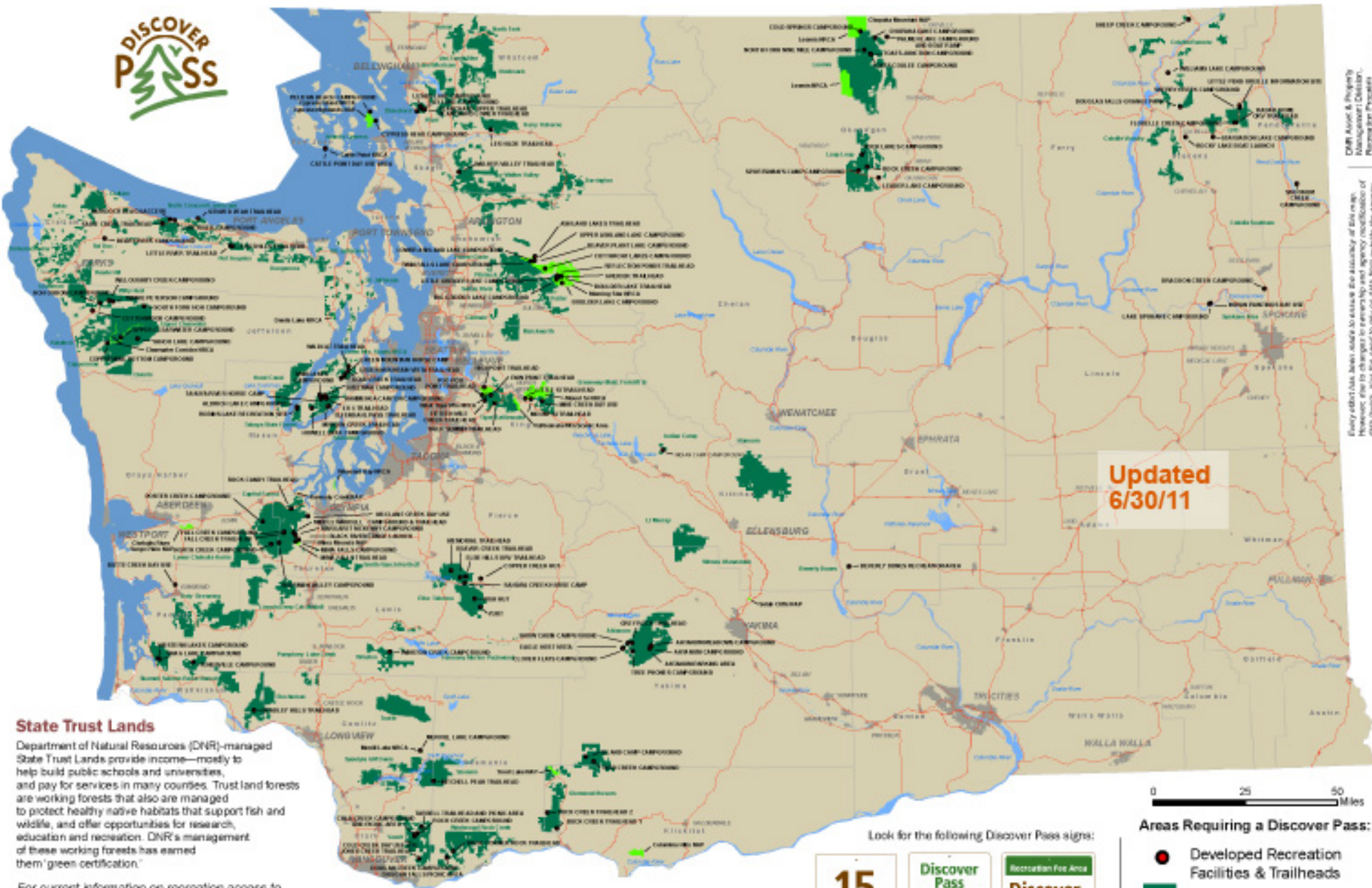


DNR-managed State Trust Lands Requiring a Discover Pass



State Trust Lands

Department of Natural Resources (DNR)-managed State Trust Lands provide income—mostly to help build public schools and universities, and pay for services in many counties. Trust land forests are working forests that also are managed to protect healthy native habitats that support fish and wildlife, and offer opportunities for research, education and recreation. DNR's management of these working forests has earned them "green certification."

For current information on recreation access to DNR-managed lands, visit: dnr.wa.gov/recreation



Thank you for your support in
keeping these recreation areas open.

discoverpass.wa.gov 1-866-320-9933

Look for the following Discover Pass signs:



Areas Requiring a Discover Pass:

- Developed Recreation Facilities & Trailheads
- Recreation Areas
- DNR-managed Natural Areas*

*Pass required only at areas indicated on map

DNR Asset & Property Management Unit
Map Update: June 2011
cartography: Jason Goldstein
graphic design: Lisa Prada

Every effort has been made to assure the accuracy of this map. However, due to changes in ownership and agency jurisdiction of state lands, and the need to rely on data from outside the agency, the Department of Natural Resources cannot accept responsibility for errors or omissions. Therefore, there are no warranties which accompany this material.