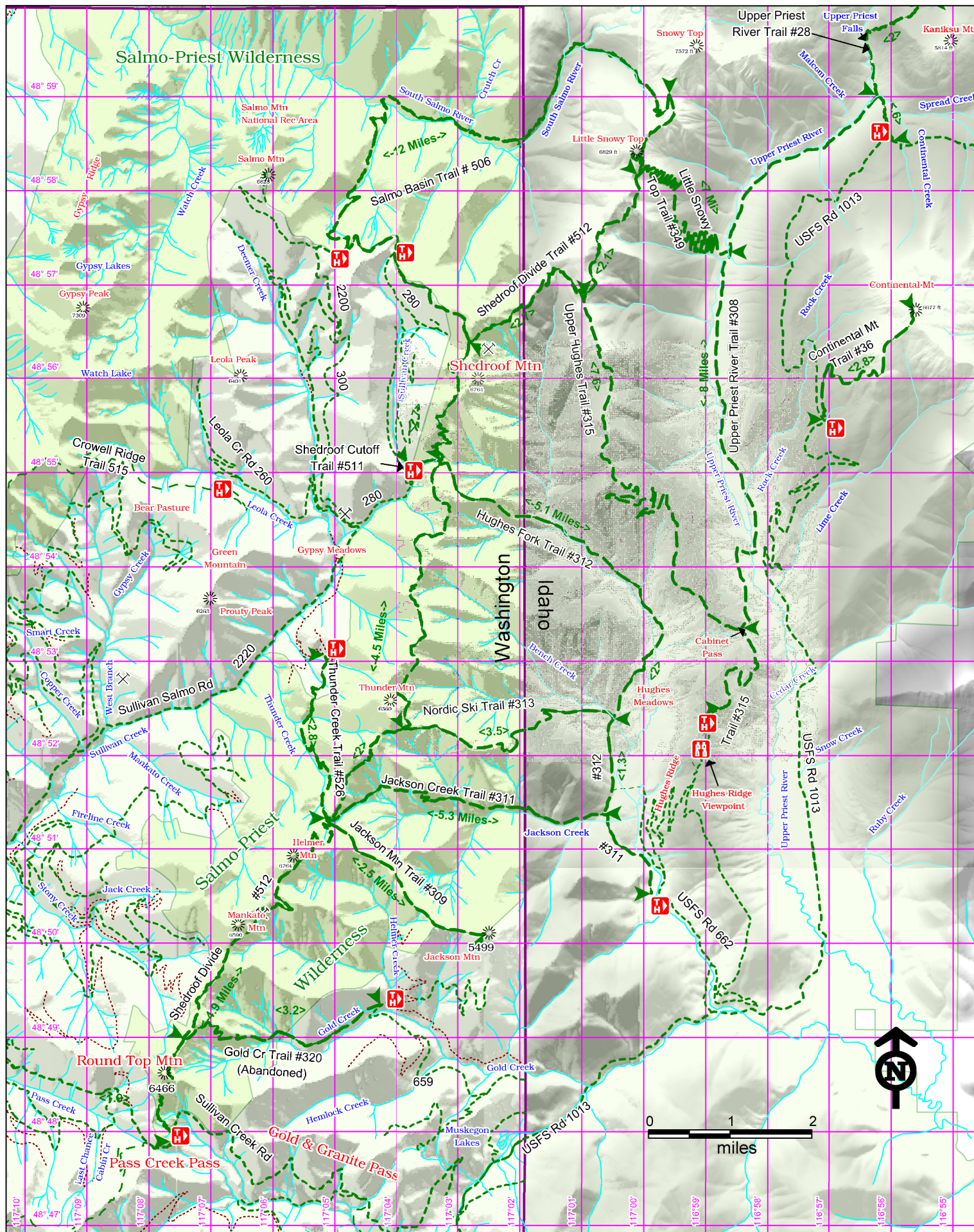


Salmo-Priest, Shedroof Divide Trails



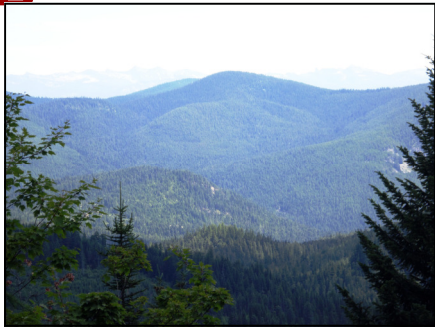
Access:

From Hwy 31 head east over the Ione Bridge 13 miles past Sullivan Lake. Turn right on Sullivan Cr. Rd. Travel 6 miles. Stay left and travel 6 miles to the Thunder Cr Trail #526. Travel .5 miles and turn left on Forest Rd 260. Travel 6.5 miles to Salmo Priest Trailhead #506.

From Hwy 31 head east over the Ione Bridge 13 miles past Sullivan Lake. Turn right on Sullivan Cr. Rd. Travel 6 miles. Stay right. Travel 7.8 miles on Sullivan/Pass Cr Rd to the Shedroof Trailhead #512. The trail takes off from the north side of the road. Travel a short distance further east for parking.



Points of Interest

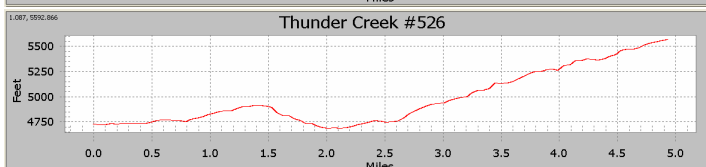
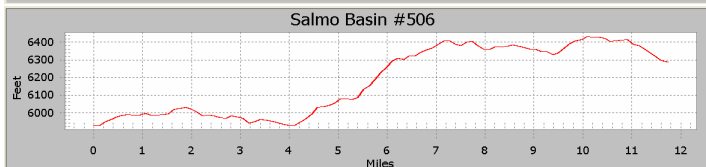
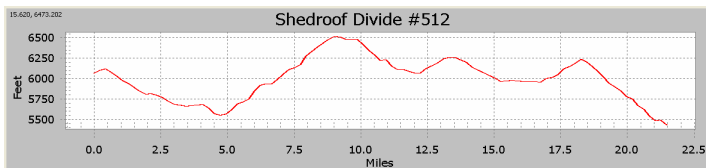


View east from Shedroof Trailhead



Pass Creek Pass

History: Shedroof is the highest and longest wilderness trail in the Salmo-Priest Wilderness.



Cautions:

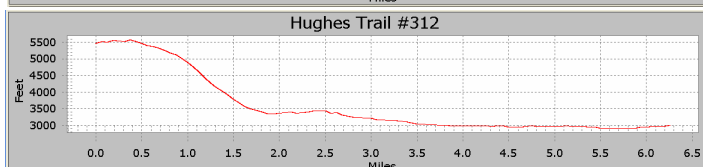
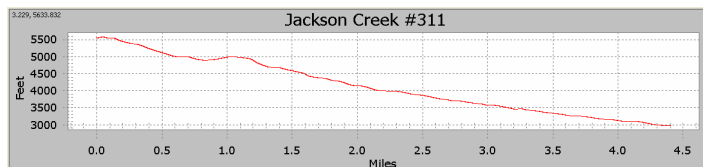
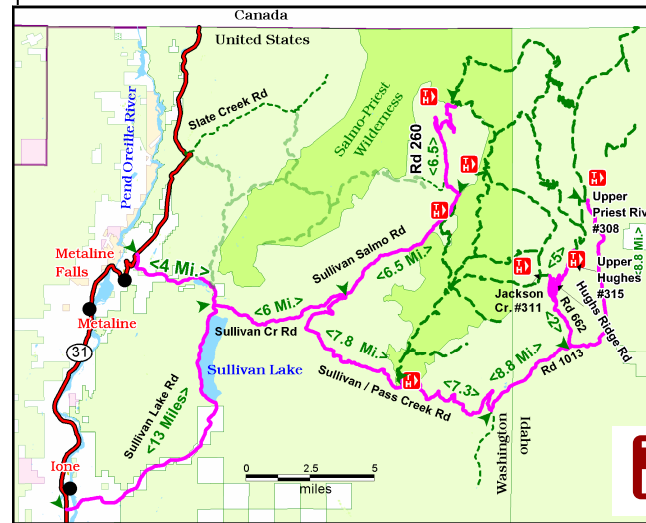
Be prepared for changes in weather. You may encounter bears and other wildlife. Take all precautions necessary to store your food safely and defend your space. No drinkable water is available along these trails without filtration. No mechanized travel is allowed.

Shedroof Divide #512, Salmo Basin #506, Thunder Cr # 526, Jackson Cr #311, Hughes Fork # 312

Characteristics	#512	#506	#526	#311	#312
Elevation at Trailhead	5450 ft	5920 ft	4750 ft	3000 ft	2970 ft
Highest Point	6500 ft	6420 ft	5550 ft	5520 ft	5510 ft
Elevation Change	1550 ft	470 ft	800 ft	2520 ft	2540 ft
Length	22 Mi.	12 Mi.	5 Mi.	4 Mi.	6.4 Mi.
Difficulty	Difficult	Difficult	Difficult	Difficult	Difficult
Season	Summer	Summer	Summer	Summer	Summer

Description:

This complex of trails provides access into and through the east arm of the Salmo-Priest Wilderness Area. These are difficult but spectacular hikes. Summer brings a profusion of flowers and berries but also Grizzly Bears. These trails are only lightly used. Check in at the Sullivan Lake Ranger Station for trail closures and other advice.



Emergency phone number: 911

For more information:

**Sullivan Lake
Ranger District
(509) 446-7500**