

WAC 220-413-030, 220-415-020, and WAC 220-415-030

Deer General Seasons, Deer Special Permits, and Carcass Importation



Washington Department of
FISH and WILDLIFE

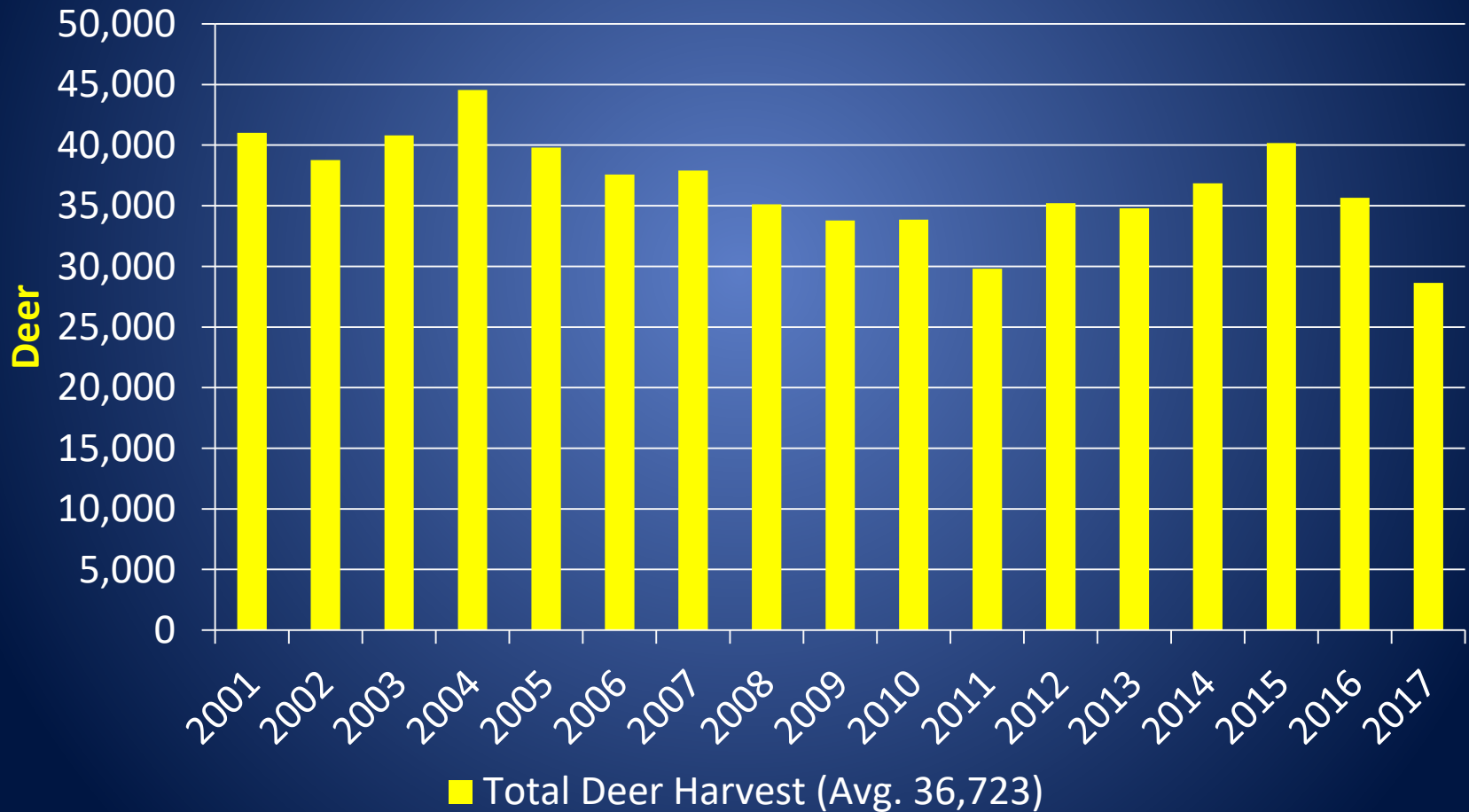
Sara Hansen
Statewide Deer Specialist, Game Division
Wildlife Program

Deer Management Goals

- Maximize opportunity
- Maintain general season opportunity whenever possible
 - One of the highest values for Washington hunters
- Avoid major perturbations of the deer populations
- Keep populations in check – maintaining social tolerance and the habitat's ability to support deer
- Maintain sustainable hunting season structures without negatively impacting the resource

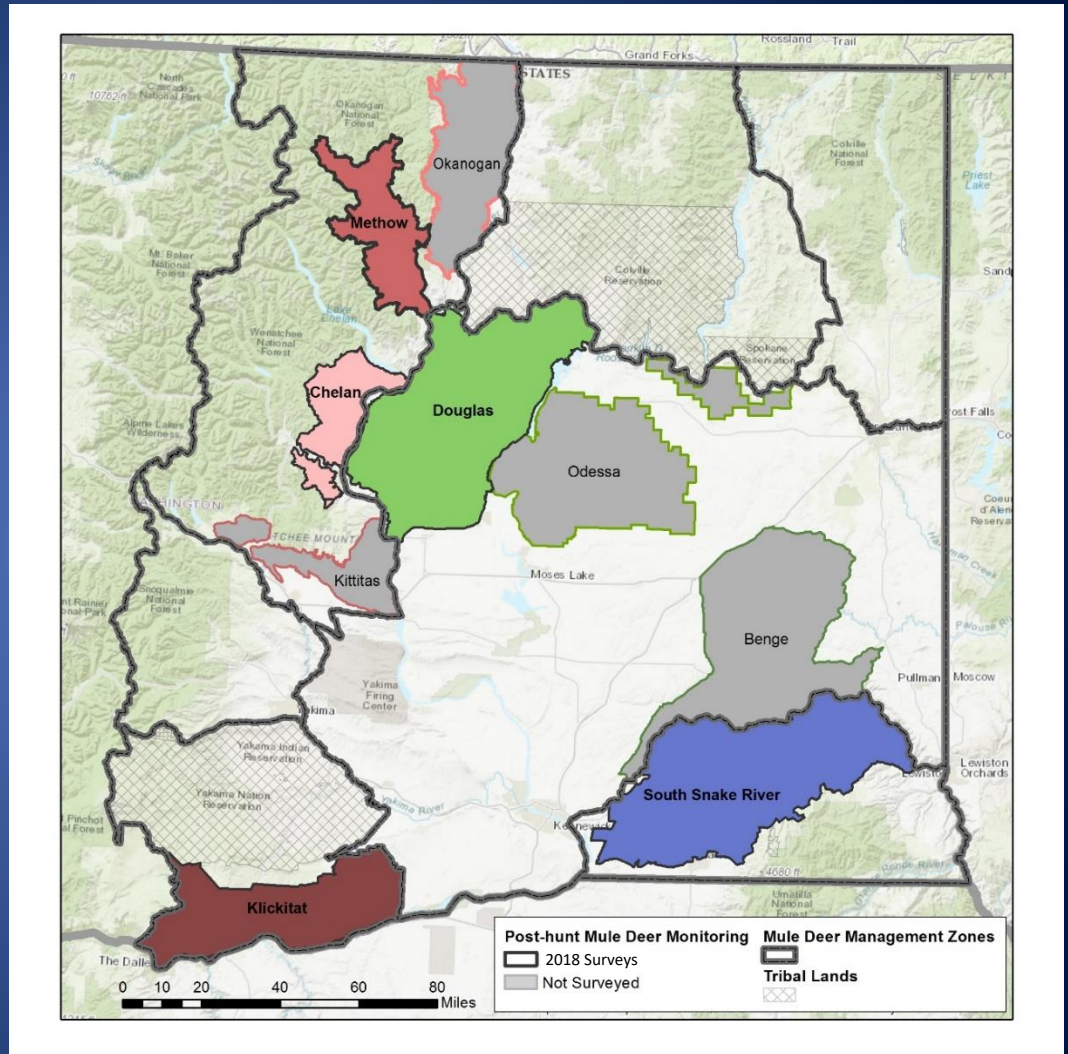
Statewide Deer Harvest 2001 to 2017

General Season and Special Permit Combined



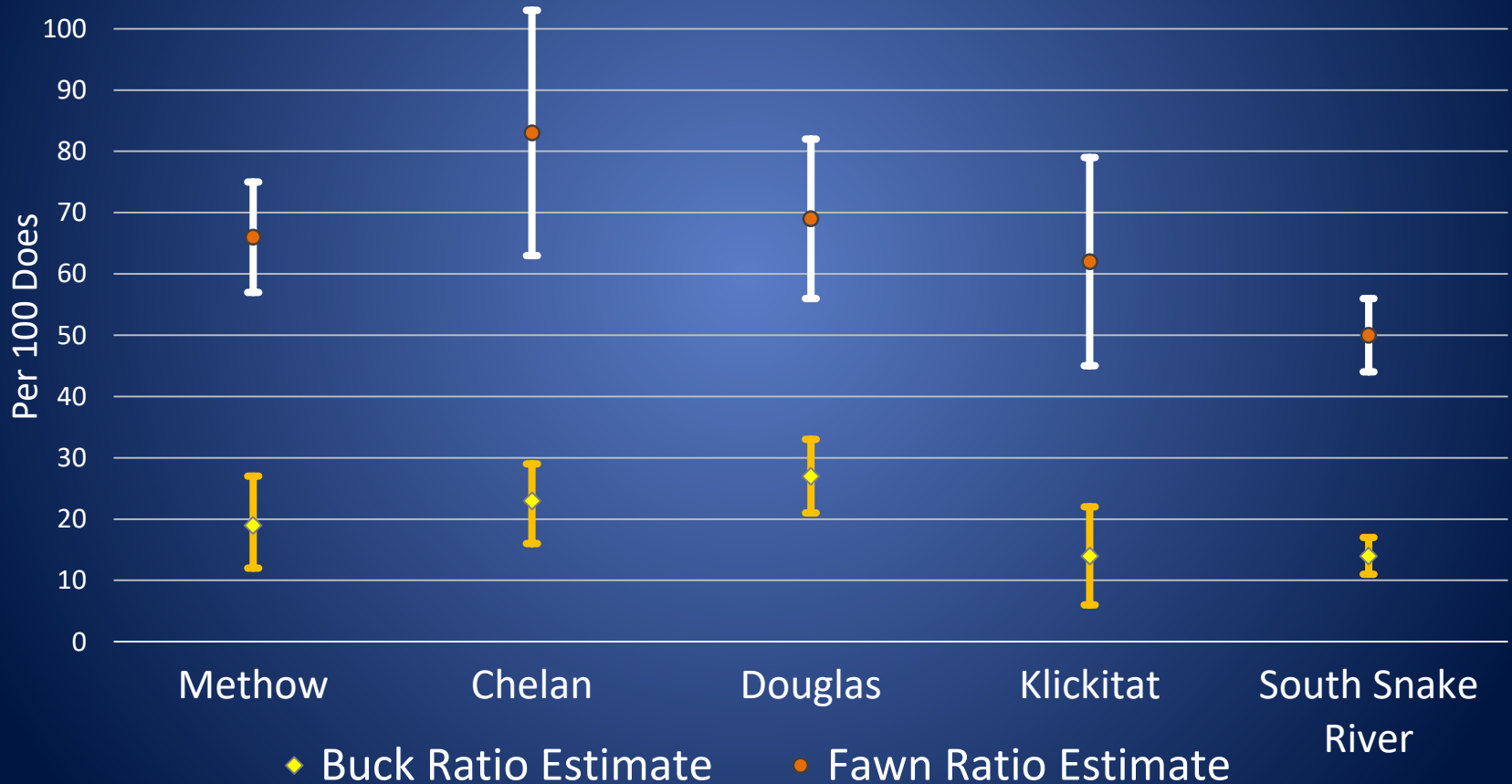
Mule Deer Surveys

- Methow
- Chelan
- Douglas
- Klickitat
- South Snake River



Mule Deer Surveys

Mule Deer Post-hunt Ratio Estimates 2018



Black-tailed Deer

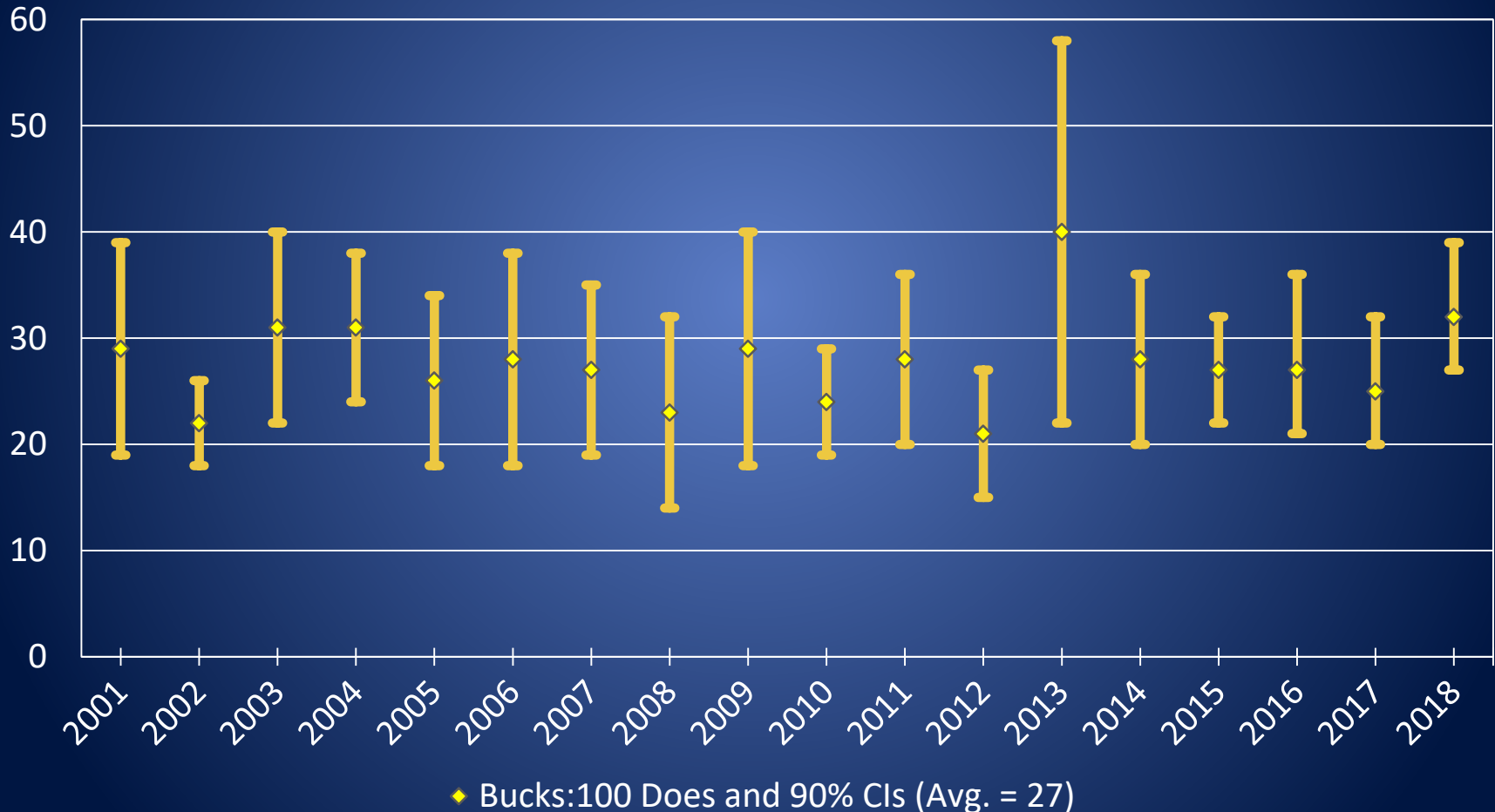
- Reliant on harvest data and field observations to manage black-tailed deer
- No major concerns being identified at this time for black-tailed deer

White-tailed Deer

- Harvest data
- Field reports
- Some ancillary data collected during mule deer aerial surveys
- Road surveys conducted in some Districts

August White-tailed Deer Buck Ratios

GMUs 105-121



Deer General Seasons

WAC 220-415-020

- Second year of three-year package
- No major changes for black-tailed or mule deer
- Archery: White-tailed Deer
 - Add five days to early, antlered opportunity in GMUs 169 and 175
- Muzzleloader: Black-tailed Deer
 - Add early, antlered opportunity in GMU 621
 - Add late, antlerless opportunity in GMU 667
 - Remove late opportunity in Deer Area 6020

Deer General Seasons continued

Recommended Adjustments:

- Eliminate antlerless, white-tailed deer opportunities in GMUs 101-121 for:
 - Modern Youth and Hunters with Disabilities (Page 12)
 - Early and late archery (Page 13)
 - Early muzzleloader (Page 14)
- Retain late muzzleloader, antlered, black-tailed deer opportunity in GMU 654 (Page 15)

Deer Special Permits

WAC 220-415-030

- Adjust quality special permits up or down through the special permit allocation process
- Reduce quality archery and modern permits in GMUs 382, 388, 578, and 574
- Adjust antlerless special permits up or down depending on management goal

Deer Special Permits continued

Recommended Adjustments:

- Eliminate antlerless, white-tailed deer opportunities in GMUs 101-121 for:
 - Antlerless (Page 25)
 - Senior 65+ (Page 26)
 - Second deer (Page 10)
- Increase modern, antlered opportunity in GMU 284 (Page 29)

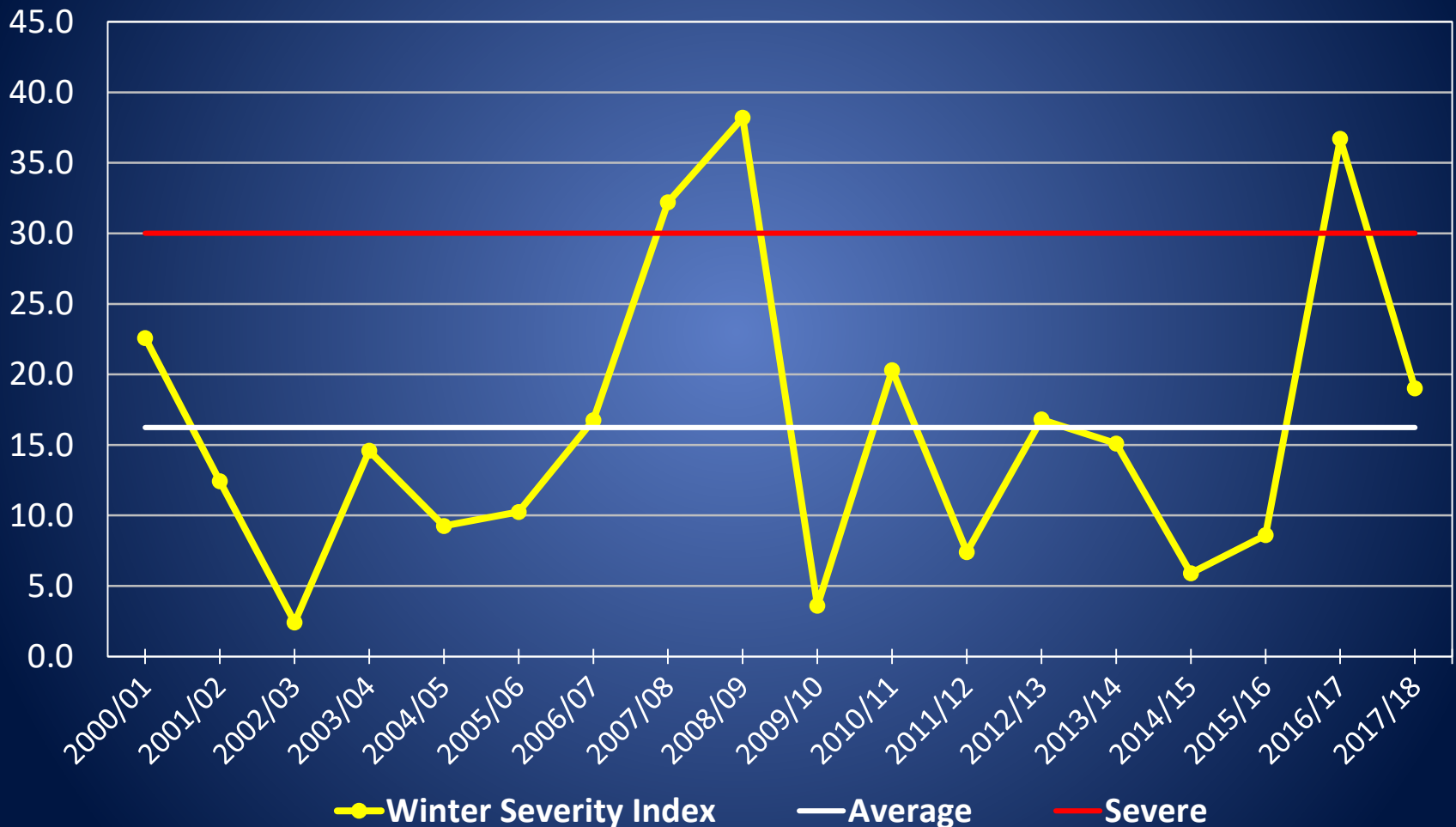
Importation and Retention of Dead Nonresident Wildlife WAC 220-413-030

- One of the intentions of this WAC is to reduce the risk of Chronic Wasting Disease (CWD) entering Washington
- To date, Washington has not detected CWD in the state
- In recent months, the state of Tennessee has detected CWD in wild, free-ranging deer
- Propose to add the state of Tennessee to the list of states and provinces in this WAC
 - The WAC requires that hunters conduct additional processing to deer, elk, and moose harvested in those states, before the carcasses can be brought home to Washington

Questions?

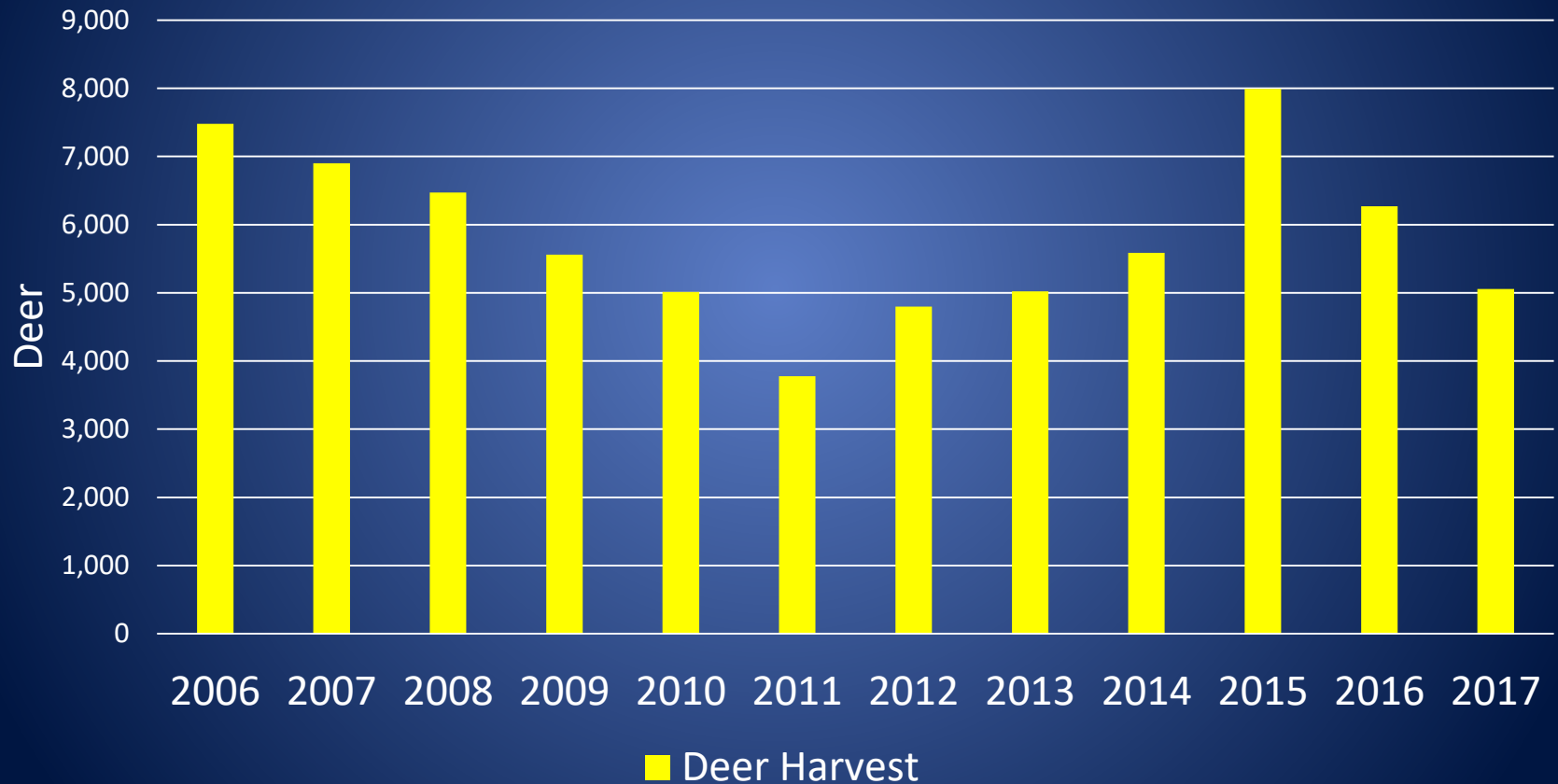


Northeast WA Winter Severity Index



Deer Harvest: District 1

Total Deer Harvest All Weapons



Hunter Success Rates

Deer Hunter Success Rates District 1

